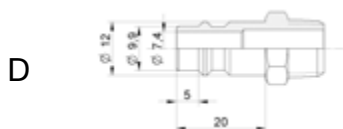
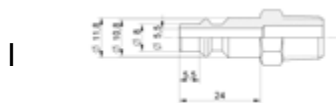


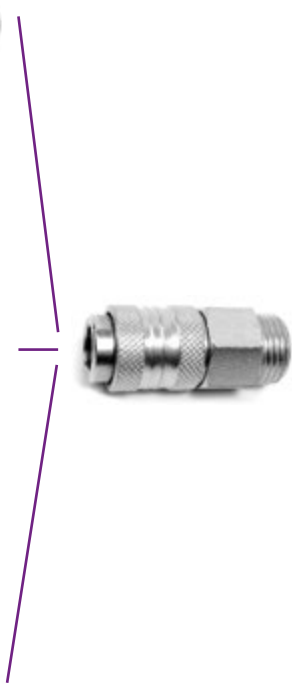
RUBINETTI E ATTACCHI RAPIDI

AUTOMATIC QUICK COUPLINGS

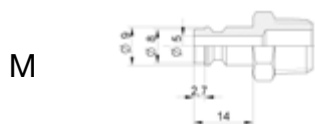
Attacco europeo
European quick coupling



USA



Attacco mignon
Mignon quick coupling



This kind of fittings allow to disconnect in a simple and quick way tube of the main installation without stopping the compressed air.

The range is composed of the Universal series which allow to connect the coupling (called universal) to 3 typologies of couplings with Italian - USA - German profile and Mignon series to use when you find reduced capacity and bulks if necessary. Every profile is manufactured according standard international sizes in order to be interchangeable in every moment.



Standard supply	See item schedule
Material	Nickel plated brass CW614 / Zinc plated steel body Nickel plated brass CW614 / Zinc plated steel ferrule Nickel plated brass CW614 / Zinc plated steel cylinder Nickel plated brass CW614 / Zinc plated steel valve Stainless steel ball NBR 70 Shore O-ring Stainless steel spring
Pressure	Max 12 bar
Use Temperature	-10°C +80°C
Use	Compressed Air
Note	The references marked by * are in Nickel plated brass

I raccordi appartenenti a questa categoria consentono di scollegare in modo semplice e rapido la tubazione dall'impianto principale senza dover interrompere il flusso d'aria compressa dalla fonte d'origine.

La gamma è composta dalla serie Universale che permette di collegare all'unico rubinetto (chiamato appunto universale) le 3 tipologie di innesti con profili Italia - Usa - Tedesco e dalla serie Mignon da utilizzare dove esistono necessità di ingombri e/o portate ridotte.

Ogni profilo è prodotto secondo le misure standard internazionali al fine di essere intercambiabile in qualsiasi momento.



Vedi tabella articolo

Disponibilità standard

Corpo in ottone nichelato CW614 / acciaio zincato
 Ghiera in ottone nichelato CW614 / acciaio zincato
 Cilindretto in ottone nichelato CW614 / acciaio zincato
 Valvola in ottone nichelato CW614 / acciaio zincato
 Sfere in acciaio Inox
 O-ring in NBR 70 Shore
 Molle in acciaio Inox

Materiali

Max 12 bar

Pressione

-10°C +80°C

Temperatura di utilizzo

Aria compressa

Impiego

I codici contrassegnati con * sono in ottone nichelato

Note

Baionetta portagomma Bayonet for rubber hose



Code	Ø	CH	L	Gr.
010614NI	6x14	15	41,0	36,0
010716NI	7x16	15	41,0	39,0
010817NI	8x17	15	43,0	46,0
0101017NI	10x17	15	43,0	49,0
0101019NI	10x19	15	45,0	62,0

Maschio portagomma Male for rubber hose



Code	F	Ø	CH	L	Gr.
01114614NI	1/4	6x14	15	40,0	36,0
01114716NI	1/4	7x16	15	40,0	40,0
01114817NI	1/4	8x17	15	41,0	48,0
011141017NI	1/4	10x17	15	43,0	50,0
011141019NI	1/4	10x19	15	45,0	56,0
01138614NI	3/8	6x14	19	41,0	38,0
01138716NI	3/8	7x16	19	41,0	44,0
01138817NI	3/8	8x17	19	42,0	50,0
011381017NI	3/8	10x17	19	44,0	52,0
011381019NI	3/8	10x19	19	46,0	58,0

Femmina portagomma Female for rubber hose



Code	F	Ø	CH	L	Gr.
01214614NI	1/4	6x14	14	40,0	32,0
01214716NI	1/4	7x16	14	40,0	36,0
01214817NI	1/4	8x17	14	42,0	43,0
012141017NI	1/4	10x17	14	44,0	43,0
012141019NI	1/4	10x19	14	45,0	50,0
01238614NI	3/8	6x14	17	41,0	36,0
01238716NI	3/8	7x16	17	41,0	41,0
01238817NI	3/8	8x17	17	42,0	48,0
012381017NI	3/8	10x17	17	44,0	48,0
012381019NI	3/8	10x19	17	48,0	55,0

Maschio con dado capettato

Male with milled nut

Code	F	CH	L	Gr.
01914NI	1/4	14	35,0	28,0
01938NI	3/8	17	32,0	32,0



Femmina con dado capettato

Female with milled nut

Code	F	CH	L	Gr.
02014NI	1/4	15	33,0	36,0
02038NI	3/8	19	34,0	35,0



Doppio dado capettato

Double milled nut

Code	F	CH	L	Gr.
02114NI	1/4	14	40,0	43,5



T con dadi capettati

Tee with milled nuts



Code	F
02214NI	1/4

Dado capettato

Milled nut



Code	F
02314NI	1/4
02338NI	3/8

Rubinetto di spurgo

Male drain cock



Code	F
02518NI	1/8
02514NI	1/4
02538NI	3/8

Maschio a baionetta

Male bayonet

Code	F	CH	L
02618NI	1/8	15	23,0
02614NI	1/4	15	23,5
02638NI	3/8	17	24



Femmina a baionetta

Female bayonet

Code	F	CH	L
02718NI	1/8	10	22
02714NI	1/4	15	23,0
02738NI	3/8	19	25



Guarnizione per baionetta

Seal bayonet

Code	F
028	1/4



Pistola di soffiaggio con raccordo
Blow gun with fitting



Code
029

F
1/4

Pistola di soffiaggio senza raccordo
Blow gun without fitting



Code
029SR

F
1/4

Pistola di soffiaggio con prolunga
Blow gun with extension



Code
030

F
1/4

Raccordo diritto con attacco a baionetta + dado con molla

Compression straight fitting with bayonet connection + nut with spring

Code	Ø
061F86NI	8X6
061F108NI	10X8



Raccordo diritto girevole con attacco a baionetta + dado con molla

Swivel compression fittings with bayonet connection + nut with spring

Code	Ø
061G86NI	8X6
061G108NI	10X8



Rubinetto maschio mignon Male mignon cock



Code	F
500M18NI*	1/8
500M14NI*	1/4

Rubinetto maschio universale Universal male cock



Code	F
500U14TNI	1/4
500U38TNI	3/8
500U12TNI	1/2
500U14OTNI*	1/4
500U38OTNI*	3/8
500U12OTNI*	1/2

Rubinetto femmina mignon Female mignon cock



Code	F
501M18NI*	1/8
501M14NI*	1/4

Rubinetto femmina universale Universal female cock

Code	F
501U14TNI	1/4
501U38TNI	3/8
501U12TNI	1/2
501U14OTNI*	1/4
501U38OTNI*	3/8



Rubinetto con portatubo mignon Mignon cock for rubber hose

Code	Ø
502M614NI*	6x14
502M817NI*	8x17



Rubinetto portatubo universale Universal cock for rubber hose

Code	Ø
502U614TNI	6x14
502U817TNI	8x17
502U614OTNI*	6x14
502U817OTNI*	8x17



Rubinetto con molla mignon Mignon cock with spring



Code	Ø
503M64NI*	6x4
503M86NI*	8x6

Rubinetto con molla universale Universal cock with spring



Code	Ø
503U86TNI	8x6
503U108TNI	10x8
503U86OTNI*	8x6
503U108OTNI*	10x8

Rubinetto a resca mignon Mignon cock with rest



Code	Ø
504M6NI*	6
504M8NI	8
504M9NI*	9

Rubinetto a resca universale Universal cock with rest

Code	Ø
504U6TNI	6
504U7TNI	7
504U8TNI	8
504U9TNI	9
504U10TNI	10
504U11TNI	11
504U12TNI	12
504U13TNI	13
504U6OTNI*	6
504U8OTNI*	8
504U10OTNI*	10
504U12OTNI*	12



Rubinetto a calzamento mignon Mignon adapter cock

Code	Ø
505M64NI*	6x4
505M86NI*	8x6



Innesto portatubo Plug for rubber hose

Code	Ø
513I614NI	6x14
513I716NI	7x16
513I817NI	8x17
513I1017NI	10x17
513I1019NI	10x19



Innesto portatubo mignon

Mignon plug for rubber hose



Code	Ø
513M614NI*	6x14
513M817NI*	8x17

Innesto maschio I

I male plug



Code	F
514I14NI	1/4
514I38NI	3/8

Innesto maschio D

D male plug



Code	F
514D14NI	1/4
514D38NI	3/8

Innesto maschio USA USA male plug

Code	F
514A14NI	1/4
514A38NI	3/8



Innesto maschio mignon Male mignon plug

Code	F
514M18NI	1/8
514M14NI	1/4



Innesto femmina I I female plug

Code	F
515I14NI	1/4
515I38NI	3/8



Innesto femmina D D female plug



Code	F
515D14NI	1/4
515D38NI	3/8

Innesto femmina USA USA female plug



Code	F
515A14NI	1/4
515A38NI	3/8

Innesto femmina mignon Mignon female plug



Code	F
515M18NI*	1/8
515M14NI*	1/4

Innesto a baionetta I I bayonet plug

Code	L
516IN	36



Innesto a resca D D plug with rest

Code	Ø
524D6NI	6
524D7NI	7
524D8NI	8
524D9NI	9
524D10NI	10
524D12NI	12



Innesto a resca USA USA plug with rest

Code	Ø
524A6NI	6
524A8NI	8
524A10NI	10



Innesto a resca mignon Mignon plug with rest



Code	Ø
524M6NI*	6
524M8NI	8
524M9NI*	9

Innesto a calzamento mignon Mignon adapter plug



Code	Ø
530M64NI*	6x4
530M86NI*	8x6

Innesto maschio con molla I I male plug with spring



Code	Ø
563I86NI	8x6
563I108NI	10x8

Innesto maschio con molla USA
USA male plug with spring

Code	Ø
563A86NI	8x6
563A108NI	10x8



Innesto maschio con molla mignon
Mignon male plug with spring

Code	Ø
563M64NI	6x4
563M86NI	8x6

